

YEAR 2013

CORE STATION 5022

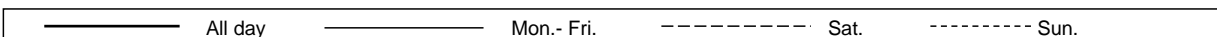
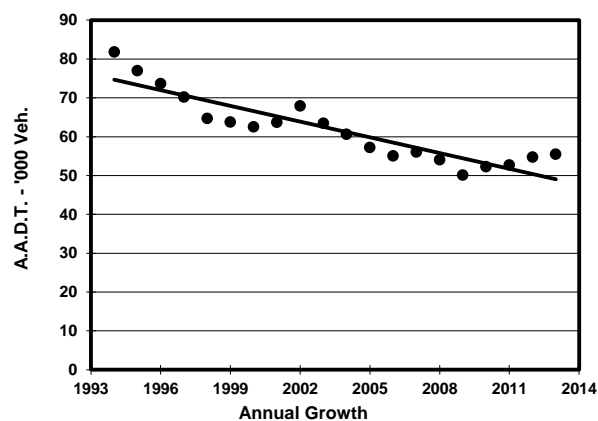
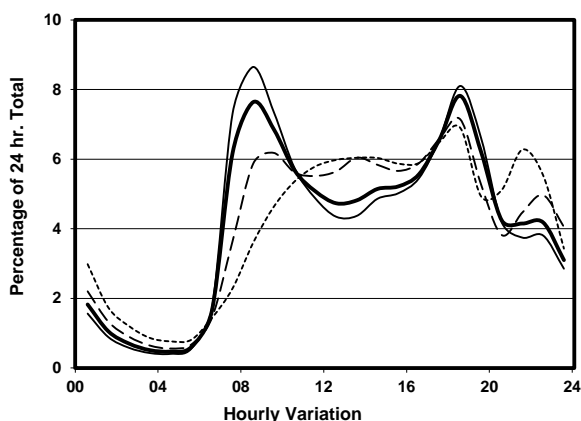
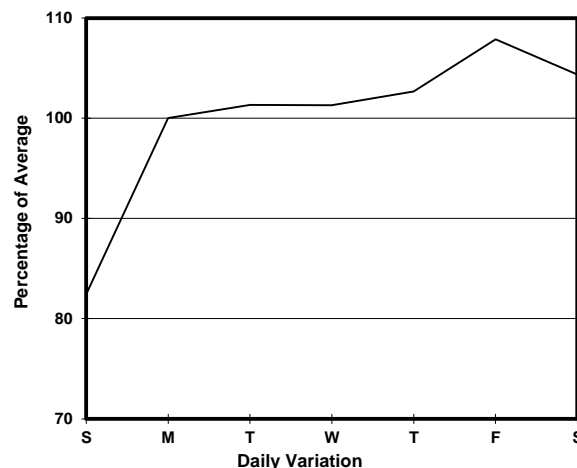
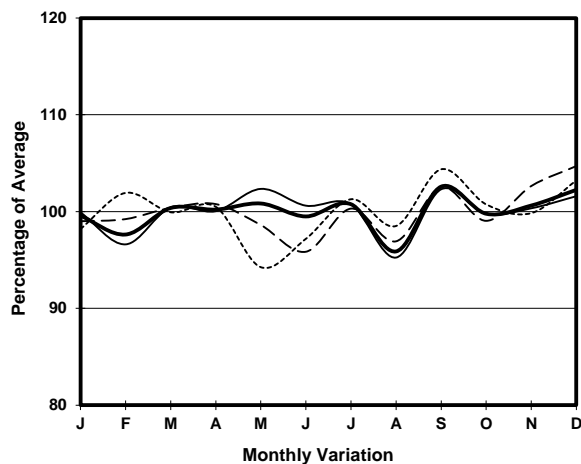
ROAD NETWORK MAJOR

ROAD TYPE URBAN TRUNK ROAD

LINK TATE'S CAIRN TUNNEL (from TOLL PLAZA to SOUTH PORTAL)



1. TRAFFIC FLOW VARIATION AND GROWTH



2. TRAFFIC CHARACTERISTICS (BY DIRECTION)

Parameter	All - Day	Mon. - Fri.	Sat.	Sun.
SOUTH BOUND				
A.A.D.T.	26720	27710	28000	22260
R 12 / 24 - %	76.7	78.6	74.1	68.6
R 16 / 24 - %	91.3	92	90.1	88.2
AM Peak Hour	0800-0900	0800-0900	0900-1000	0900-1000
One-way flow at AM peak hour	2470	2900	2100	1200
T - % (AM)	-	15.5	-	-
PM Peak Hour	1800-1900	1800-1900	1800-1900	1800-1900
One-way flow at PM peak hour	1930	1980	2030	1730
T - % (PM)	-	11.7	-	-
Prop.of commercial vehicles - 16 hr.	-	14.2	-	-
NORTH BOUND				
A.A.D.T.	28790	29810	30410	23980
R 12 / 24 - %	66.3	67.2	65.6	61.5
R 16 / 24 - %	89	90	86.4	85.4
AM Peak Hour	0800-0900	0800-0900	0900-1000	0900-1000
One-way flow at AM peak hour	1780	2080	1510	940
T - % (AM)	-	14	-	-
PM Peak Hour	1800-1900	1800-1900	1800-1900	1800-1900
One-way flow at PM peak hour	2410	2690	2140	1460
T - % (PM)	-	10.1	-	-
Prop.of commercial vehicles - 16 hr.	-	13.6	-	-

3. OTHER INFORMATION AND COMMENT

4. Vehicle classification and occupancy - Monday to Friday

Time		Class of vehicle									
		Motor Cycle	Private Car	Taxi	Private LB	PLB	Goods veh.		Non Fr. Bus	Fr. Bus	
							Light	M & H		SD	DD
0700-0800	Pro	4.9	54.1	13.4	1.1	0.0	11.0	3.2	4.5	0.0	7.8
	Ocp	1.1	1.6	2.2	5.9	0.0	1.7	1.5	37.3	0.0	74.3
0800-0900 Peak hour	Pro	2.7	59.0	13.0	0.4	0.0	9.9	4.6	3.7	0.0	6.6
	Ocp	1.1	1.3	2.1	4.2	0.0	1.8	1.5	39.3	0.0	78.8
0900-1000	Pro	2.2	52.2	16.7	0.5	0.0	15.3	4.5	2.4	0.0	6.2
	Ocp	1.1	1.3	2.0	2.6	0.0	1.8	1.4	22.6	0.0	39.6
1000-1100	Pro	2.9	47.5	14.4	1.0	0.0	18.9	6.6	1.8	0.0	6.9
	Ocp	1.0	1.4	2.0	2.3	0.0	1.6	1.4	7.8	0.0	31.6
1100-1200	Pro	1.9	52.9	10.2	0.6	0.0	20.2	6.6	1.3	0.0	6.3
	Ocp	1.0	1.5	2.2	1.5	0.0	1.6	1.5	19.1	0.0	37.2
1200-1300	Pro	1.5	51.4	12.7	0.3	0.0	16.5	9.2	1.7	0.0	6.6
	Ocp	1.1	1.5	2.2	2.0	0.0	1.6	1.5	19.3	0.0	30.9
1300-1400	Pro	1.9	49.5	11.0	1.0	0.0	19.2	10.1	0.8	0.0	6.5
	Ocp	1.2	1.5	2.4	2.0	0.0	1.6	1.4	25.6	0.0	35.4
1400-1500	Pro	1.1	51.9	9.0	0.5	0.0	19.7	10.3	1.1	0.0	6.5
	Ocp	1.1	1.4	2.1	3.3	0.0	1.7	1.4	30.7	0.0	32.2
1500-1600	Pro	1.9	48.9	8.6	1.0	0.0	22.6	7.2	3.0	0.0	6.8
	Ocp	1.1	1.4	2.1	5.2	0.0	1.6	1.4	13.4	0.0	30.1
1600-1700	Pro	2.2	49.5	13.2	0.7	0.0	19.0	7.2	1.8	0.0	6.4
	Ocp	1.0	1.4	2.1	2.2	0.0	1.7	1.5	28.2	0.0	39.9
1700-1800	Pro	2.3	55.2	11.6	0.5	0.0	16.1	4.8	1.9	0.0	7.6
	Ocp	1.0	1.6	2.3	1.5	0.0	1.7	1.6	23.5	0.0	48.6
1800-1900	Pro	2.8	65.0	10.1	0.1	0.0	11.2	2.9	1.7	0.0	6.2
	Ocp	1.1	1.5	2.3	1.0	0.0	1.6	1.5	41.1	0.0	72.9
1900-2000	Pro	2.3	71.0	10.9	0.1	0.0	4.6	2.4	1.8	0.0	6.9
	Ocp	1.2	1.5	2.3	1.0	0.0	1.8	1.3	24.3	0.0	64.2
2000-2100	Pro	3.6	70.1	12.1	0.3	0.0	5.3	0.6	1.3	0.0	6.6
	Ocp	1.2	1.4	2.1	2.0	0.0	1.4	1.5	25.1	0.0	54.8
2100-2200	Pro	2.6	63.1	19.2	0.2	0.0	3.6	0.6	1.4	0.1	9.3
	Ocp	1.2	1.5	2.3	1.0	0.0	1.2	1.3	18.1	1.0	47.8
2200-2300	Pro	1.7	65.5	19.0	0.0	0.0	3.8	1.6	1.0	0.0	7.4
	Ocp	1.4	1.6	2.4	0.0	0.0	1.3	1.2	23.0	0.0	49.0
16 hours	Pro	2.5	57.1	12.7	0.5	0.0	13.3	5.0	2.1	0.1	6.8
	Ocp	1.1	1.5	2.2	3.1	0.0	1.6	1.4	28.0	1.0	51.0

Legend

- Pro.** Proportion of vehicles in % (Sum may not add up to 100% due to figure rounding)
- Ocp.** Average occupancy of vehicles
- M&H** Medium and Heavy